

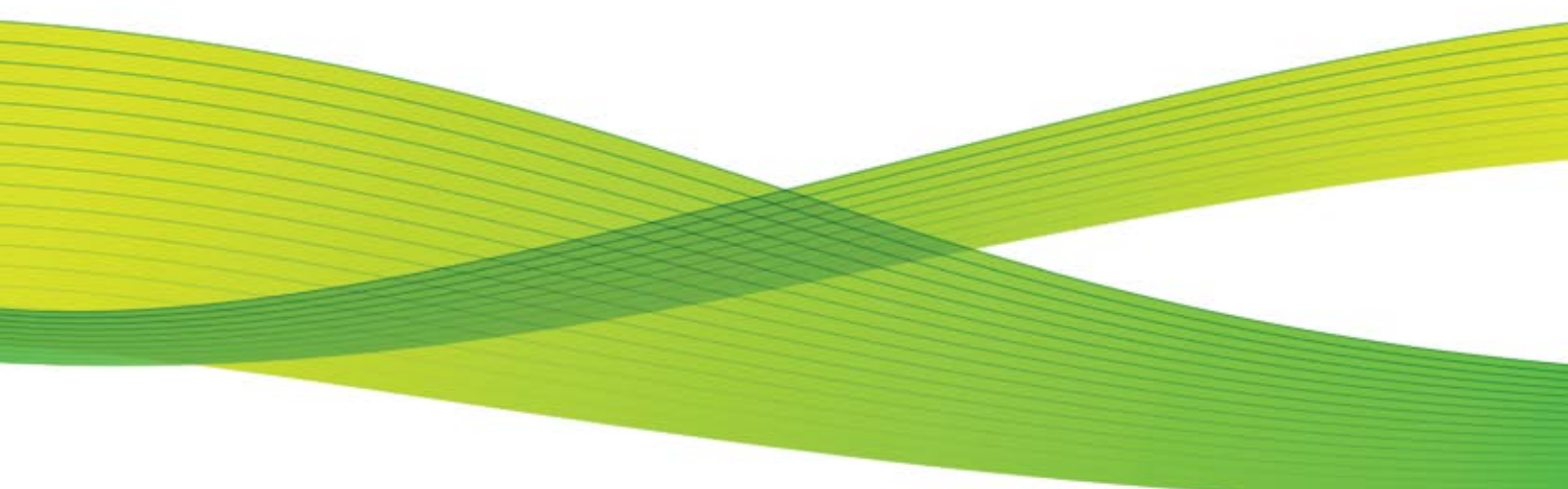
ApeosPort
7000
6000



ApeosPort-II 7000 / 6000

Digital Black and White Multifunction Device

A multifunction contender with lightning speed and performance



Your all-in-one feature packed performer

The ApeosPort-II 7000 / 6000 multifunction devices are capable of producing exceptional quality output at up to 1,200 x 1,200 dpi at incredible speeds of up to 75 / 65 ipm.

Built on Fuji Xerox's successful Apeos iiX (Apeos Internet Integration based on XML and SOAP) platform, the capabilities of these devices extend beyond those of a regular multifunction. Apeos iiX turns your MFD into a document portal and can be customised to meet your business objectives. By connecting several business critical applications, you can increase staff productivity, as well as improve business and environmental efficiencies.

Combining this platform with outstanding copy, print, scan and fax features will help improve workflows, increase productivity and protect intellectual property, saving you time and money.

The ApeosPort-II 7000 / 6000 have been independently verified to meet the requirements of "GECA 10-2008 Printers and Imaging Equipment" by the Good Environmental Choice Australia <http://www.GECA.org.au>



ApeosPort-II 7000 with optional High Capacity Feeder x 2, Tri-fold unit and D++ Finisher

Configuration and finishing options

Functional configurations

Available with copying, printing, scanning and optional faxing functionality this device is equipped to manage the heaviest of workloads and can be configured with a range of paper tray and finishing options.

Paper tray flexibility

ApeosPort-II 7000 / 6000 is available with the following paper trays as standard:

- 2 x Fully adjustable paper trays (A5 to A3)
- 2 x High capacity paper trays (A4 only)

For added paper capacity the following options are also available:

- 1 x High Capacity Feeder (up to 2,000 sheets)
- OR
- 2 x High Capacity Feeder (up to 4,000 sheets plus additional bypass tray paper capacity)

Finishing options

ApeosPort-II 7000 / 6000 can be configured to include any one of the following catch trays or finishers:

- Simple Catch Tray - for uncollated print documents
- Offset Catch Tray - collates and separates print documents
- C-Finisher - Stacker / Stapler / Puncher
- C-Finisher ++ - Stacker / Stapler / Puncher / Booklet Maker
- D-Finisher - Stacker / Stapler / Puncher / Interposer
- D-Finisher ++ - Stacker / Stapler / Puncher / Interposer / Booklet Maker
- Tri-Folder - C and Z folds (optional with both D-Finishers)

Customisable user interface

The standard customisable user interface allows you to standardise the look and feel of these and all other similarly equipped Fuji Xerox devices in your office.

Configuration options



- | | | | | | | | | |
|--------------------------|--------------------------|-----------------------------|-----------|----------------------------|--|---|---|--|
| 1 | 2 | 3 | 4 | 5 | 6 | 7 | 8 | 9 |
| High Capacity Feeder x 1 | High Capacity Feeder x 2 | Large Colour User Interface | Base Unit | Simple / Offset Catch Tray | C-Finisher Stacker / Stapler / Puncher | C-Finisher ++ Stacker / Stapler / Puncher / Booklet Maker | D-Finisher Stacker / Stapler / Puncher / Interposer | D-Finisher ++ Stacker / Stapler / Puncher / Interposer / Booklet Maker |



- | | | |
|--|--|--|
| 1 | 2 | 3 |
| Convenient access to copying, scanning, faxing and email | Fully customisable User Interface layout | Customisable hard button shortcut keys |

Copy



Smooth and speedy copying is a given with your ApeosPort-II 7000 / 6000 devices. Operating at speeds of 75 / 65 ipm with up to 1,200 x 1,200 dpi copy resolution and a fast first copy out time of three seconds or less, these devices will help keep your office productive.

Multiple-up copying

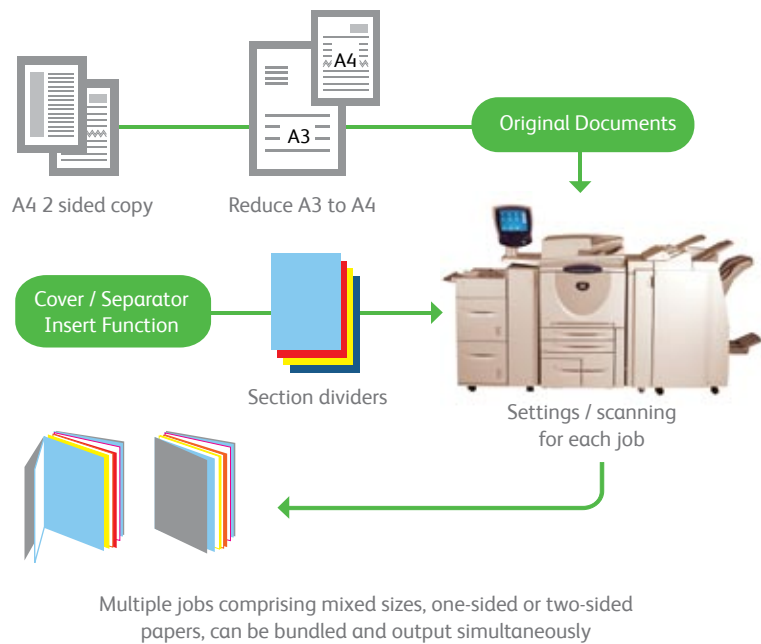
This cost saving feature conserves paper and toner by allowing users to copy / print multiple pages (up to 32 pages) on one sheet.



Enhance your productivity with sophisticated copy and print features

Job build

Merging and manipulating hardcopy documents made easy. This feature allows users to divide a copy job into numerous segments, apply unique settings to each, collate and print all segments, thus eliminating the need for manual copying and collation (see diagram below).



Media identification and auto tray switching

The intuitive DADF reduces manual handling by automatically identifying (and reproducing size for size) original documents being copied. It also maintains productivity by automatically switching paper trays when the current tray is emptied.

Additional copy features

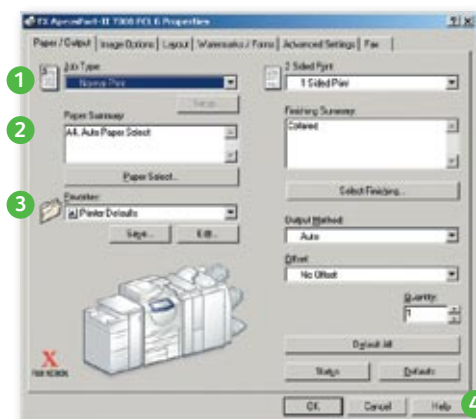
- Insert user defined annotations
- Watermark / Digital security watermark (optional)
- Covers insertion
- Poster creation

Print



WHQL certified print drivers

The intuitive WHQL certified PCL6 and PostScript print drivers are standard features on this device and enable seamless integration with various industry standard operating systems.



- 1 Drop down menu for secure print, fax, save to mailbox and more
- 2 Paper selection summary window
- 3 Favourite print settings
- 4 Help function for feature descriptions and driver assistance

An Adobe PostScript 3 print driver is also available if required

Favourite print settings

Save time by storing the settings of frequently printed documents as favourites in your print driver. Settings include paper sizes, covers, duplexing, finishing and more.

Driverless printing

Conveniently, the ApeosPort-II 7000 / 6000's allow driverless printing of PDF, TIFF or PRN files from any network connected PC via the CentreWare Internet Services web utility. This is helpful for printing at remote locations without having to install print drivers.



Direct Printing to any Fuji Xerox device across your LAN / WAN

Mailbox print / document merge

Documents printed frequently by multiple users can be saved to a mailbox repository at the device for quick and easy retrieval on demand. Within an individual mailbox, multiple documents can also be merged to create one single document for print.

Additional print features

- Secure print
- Delayed print
- Watermark / Digital security watermark (optional)
- Email print job confirmation

Scan



Colour scanning, a single pass duplexing automatic document feeder (in monochrome) and other enhanced features substantially simplify the process of digitising and distributing hardcopy documents at these devices.

Single Pass Duplexing Automatic Document Feeder

ApeosPort's Duplexing Automatic Document Feeder saves time and reduces the likelihood of paper jams by scanning both sides of a double-sided monochrome document simultaneously. This allows it to maintain the same productivity in both simplex and duplex modes.

Password protect PDF documents

Hardcopy documents scanned as PDF's can be password protected with restrictions imposed for opening, editing, selecting or printing the document.

Job flow sheets

This feature allows you to route scanned documents to multiple destinations, (see diagram below):



Additional scan features

- Restrict alterations to the scan to email "From" field
- Restrict access to addresses not listed in the local or mail server address books
- Online mailbox document retrieval to reduce mail server traffic
- Browse network folders

Fax



Device Management

The fax feature available with the ApeosPort-II 7000 / 6000 can be configured with up to 3 lines or integrate with a number of server fax solutions. Regardless of the set-up, the robust capabilities of this fax solution will help streamline your fax workflows.

Electronic fax

Concerned about losing faxes in amongst other documents at your device? This feature provides peace of mind by routing incoming faxes to an email address, mailbox or network connected PC for retrieval and further distribution on demand.

Fax restriction

Restrict users from sending faxes to numbers not listed in the address book. This will help protect confidential documents and reduce costs by preventing users from using the fax function for non-business purposes.

Server fax integration

The Server Fax option available with ApeosPort-II 7000 / 6000 allows it to integrate with your organisation's applicable existing server fax solution.

Additional fax features

- PC Fax - send faxes directly from your PC print driver
- Storing undelivered faxes at the device to be re-sent

Control the costs associated with your ApeosPort-II 7000 / 6000 and administer the device using the following management tools included for FREE:

Xerox Standard Accounting - limit the quantity of print, copy, scan and fax jobs individual users can produce and track usage via CSV file.

CentreWare Internet Services - configure device settings, monitor usage / consumables, upload address books, enable Auditor and much more.



1
Configure
audiron

2
Configure
mailboxes

3
Upload email
address books
as csv files

4
Monitor
paper tray /
consumables
status

5
Monitor
job queues

6
Submit
driverless
print jobs

Extending your capabilities with Apeos Solutions

Apeos iiX (Apeos Internet Integration based on XML and SOAP) extends ApeosPort's capabilities beyond those of a regular multifunction device (MFD). Apeos iiX allows users to connect to various web applications and provides a suite of Software Development Kits for the seamless customisation and integration of all business applications with ApeosPort... making it a truly intelligent portal.

Applying these technologies to document intensive processes, enables greater productivity and efficiencies benefiting both the bottom line and the environment.

Apeos Image Gateway Solutions

Fuji Xerox has partnered with Nuance, Captaris and Bear Solutions, leading suppliers of document workflow, fax server and cost recovery technologies to co-develop a range of innovative solutions that will integrate with your ApeosPort devices to help streamline workflows, improve efficiencies and manage costs.

RightFax for Apeos

A fax server solution, RightFax for Apeos provides faxing capabilities without installing a fax board on your ApeosPort device. Faxes can be sent at the device or directly from a user's PC. At the user interface, users are given the opportunity

to attach a predefined cover sheet (that can be auto populated), specify a send time / date, request an emailed or printed job confirmation and more. Sent and received faxes can also be tracked using the web access utility at any network connected PC.

OmniPage for Apeos

This scanning solution will provide users with the extended ability to digitise hard copy documents as text only or text searchable PDF files. Documents can be de-skewed and / or rotated as required prior to distribution to an email address or network repository, reducing the business and environmental cost of hard copy distribution and archiving.

XCMS for Apeos

XCMS for Apeos is a comprehensive cost recovery solution that works with a range of swipe / proximity cards to capture usage data for all the copies, prints, scans and faxes produced by individual users on your fleet of ApeosPort devices enabling responsible paper use management and measurement.

Combining XCMS for Apeos with RightFax and OmniPage for Apeos extends its feature sets even further to include the powerful "My Prints" and "My Faxes" options from any enabled ApeosPort device on your organisation's LAN or WAN.



Specifications of ApeosPort-II 7000 / 6000 Series

ITEMS	SPECIFICATIONS	
Output Speed - Printing and Copying		
	ApeosPort-II 7000	ApeosPort-II 6000
A4 monochrome	75 ipm	65 ipm
A3 monochrome	37 ipm	33 ipm
Print Function		
	ApeosPort-II 7000 / 6000	
Processor	Power PC e300 667 MHz	
Memory	768 MB	
Hard Disk	40 GB	
Interface	Standard: Ethernet 100Base-TX / 10Base-T, Optional: USB 2.0	
Printer Languages	Standard: PCL6, PCL5, Adobe PostScript 3	
Resolution	Up to 1,200 x 1,200 dpi	
Operating Systems	Microsoft® Windows 2000, Microsoft® Windows XP, Microsoft® Windows Server 2003, Microsoft® Windows Vista, Mac OS 8.6 - Mac OS 9.2.2 English, Mac OS X 10.3.9 - 10.4.9 English	
Copy Function		
	ApeosPort-II 7000 / 6000	
FCOT	3 seconds	
Concurrency	Yes	
Resolution	Up to 1,200 x 1,200 dpi	
Scan Function		
	ApeosPort-II 7000 / 6000	
Scanning Speed	Colour: 50 ipm. Monochrome: up to 200 ipm	
Resolution	600 / 400 / 300 / 200 dpi	
Scan Destinations	Email, folder / server (via SMB / FTP protocol), mailbox	
Fax Function (Optional)		
	ApeosPort-II 7000 / 6000	
Transmission Time	3 seconds or less	
Number of Lines	Up to 3 lines	
Sending Document Size	A5 to A3	
Duplex Automatic Document Feeder		
	ApeosPort-II 7000 / 6000	
Capacity	250 sheets each	
Paper Sizes	A5 to A3	
Paper Weights	38 to 157 gsm	
Paper Trays 1 & 2		
	ApeosPort-II 7000 / 6000	
Capacity	500 sheets per tray	
Paper Sizes	A5 to A3	
Weights	52 to 200 gsm	
Paper Tray 3		
	ApeosPort-II 7000 / 6000	
Capacity	1,490 sheets	
Paper Sizes	A5 to A4	
Weights	52 to 200 gsm	
Paper Tray 4		
	ApeosPort-II 7000 / 6000	
Capacity	1,860 sheets	
Paper Sizes	A5 to A4	
Weights	52 to 200 gsm	
Bypass Tray		
	ApeosPort-II 7000 / 6000	
Capacity	Standard Tray: 100 sheets Standard Tray (with High Capacity Feeder x 2): 250 sheets	
Paper Sizes	Up to A3	
Weights	Standard Tray: 52 to 250 gsm Standard Tray (with High Capacity Feeder x 2): 52 to 280 gsm	

Protecting the environment is a fundamental component of our company's commitment to corporate citizenship. At Fuji Xerox Australia, we supply products that have been designed with both our customers and the environment in mind. As a world leader in the development of parts and components Remanufacturing Programs, we have made Eco Manufacturing an integral part of our business. All our sites have achieved ISO 14001:2004 Environmental Management System Certification, as a demonstration of our commitment to protecting the environment.

Descriptions in this material, product specifications and / or appearances are subject to change without prior notice due to improvements. Please note that the product colour appears differently from the actual colour as a result of properties of papers or printing ink. Windows and Windows NT are registered trademarks of Microsoft Corporation. NetWare is a registered trademark of Novell, Inc. in the United States. Macintosh, Mac OS and Ether Talk are trademarks of Apple Computer, Inc. PostScript is a registered trademark of Adobe Systems Incorporated in each country. HP-GL is a registered trademark of Hewlett-Packard Company. Nuance, the Nuance logo and OmniPage are registered trademarks or trademarks of Nuance Communications, Inc. in the United States and other countries and are used here under license. RightFax, Alchemy and Captaris are registered trademarks or trademarks of Captaris Inc. and are used here under license. The XCMS logo is used with permission from BEAR Solutions (Australia) Pty Ltd.

Spare parts for the standard configuration of installed machines is supported for up to 7 years from the date the manufacturer ceases manufacturing new machines

For more information or detailed product specifications, call **13 14 12**
Fuji Xerox Australia ABN 63 000 341 819
 101 Waterloo Road, Macquarie Park NSW 2113
 Tel. (02) 9856 5000 Fax. (02) 9856 5003

www.fujixerox.com.au

Optional Accessories

High Capacity Feeder x 1

ApeosPort-II 7000 / 6000	
Capacity	2,000 sheets (1 x Tray)
Paper Sizes	B5 to A4
Weights	52 to 200 gsm

High Capacity Feeder x 2

ApeosPort-II 7000 / 6000	
Capacity	4,000 sheets (2 x Trays)
Paper Sizes	B5 to A4
Weights	52 to 200 gsm

C-Finisher: Stacker / Stapler / Puncher

ApeosPort-II 7000 / 6000	
Stacker Capacity	Up to 3,000 sheets
Stapler Capacity	50 sheets
Stapler Paper Sizes	B5 to A3

C-Finisher ++: Stacker / Stapler / Puncher / Booklet Maker

ApeosPort-II 7000 / 6000	
Stacker Capacity	Up to 1,500 sheets
Stapler Capacity	50 sheets
Stapler Paper Sizes	B5 to A3
Booklet Maker Paper Sizes	A4 to A3
Booklet Maker Paper Weights	15 sheets (at 90 gsm) OR 13 sheets (at 90 gsm) PLUS 1 cover sheet (at 90 to 200 gsm)

D-Finisher: Stacker / Stapler / Puncher / Interposer

ApeosPort-II 7000 / 6000	
Stacker Capacity	Up to 3,000 sheets
Stapler Capacity	100 sheets
Stapler Paper Sizes	B5 to A3

D-Finisher++ Stacker / Stapler / Puncher / Interposer / Booklet Maker

ApeosPort-II 7000 / 6000	
Stacker Capacity	Up to 2,000 sheets
Stapler Capacity	100 sheets
Stapler Paper Sizes	B5 to A3
Booklet Maker Paper Sizes	A4 to A3
Booklet Maker Paper Weights	15 sheets (at 90 gsm) OR 13 sheets (at 90 gsm) PLUS 1 cover sheet (at 90 to 200 gsm)

Hole Puncher (Standard With All Finishers)

ApeosPort-II 7000 / 6000	
Puncher Paper Sizes	B5 to A3
Puncher Paper Weights	90 to 200 gsm
Number of Holes	Standard: 2 and 4 holes, Optional: 3 holes

Tri-Folder (Optional With Both D-Finishers)

ApeosPort-II 7000 / 6000	
Fold Types	C or Z folds
Paper Sizes	A4 to A3
Paper Weights	60 to 90 gsm

General

ApeosPort-II 7000 / 6000	
Electrical Requirements	240 V, 10 A
Power Consumption	1,800 W
Warm up	30 seconds
Dimensions	From 1,491 mm x 815 mm x 1,166 mm (W x D x H)
Weight	195 kg or less

Customer Expectation Document (CED)

For detailed product specifications, optimum performance parameters and service clearances refer to Product Customer Expectation Document.



Reproduction Prohibitions Please note that the reproduction of the following is prohibited by law: domestic and overseas bank notes, government-issued securities, national bonds and local bond certificates; unused postage stamps and some post cards; certificate stamps; and copyright material (literary works, musical works, paintings, engraving, maps, cinematographic works, photographic works etc) except where and to the extent that the local law provides otherwise. This product is equipped with anti-counterfeit feature. This feature is not intended to prevent illegal reproduction.



For Your Safe Use

Before using the product, read the Instruction Manual carefully for proper use. Use the product with an appropriate adequate power source and voltage displayed. Be sure to establish a ground. In the case of a failure or short circuit, an electric shock may result.

