

## Specifications

### ApeosPort C7550I / C6550I / C5540I

#### Output Speed - Printing & Copying

	C7550I	C6550I	C5540I
A4 Colour	50 ipm	50 ipm	40 ipm
A4 Monochrome	75 ipm	65 ipm	55 ipm
A3 Colour	25 ipm	25 ipm	20 ipm
A3 Monochrome	37 ipm	33 ipm	28 ipm

#### Standard full screen colour User Interface

##### Network Printing

Processor	Power PC750 600MHz
Memory (Standard)	1GB
Hard Disk	ApeosPort C7550I / C6550I: 80GB ApeosPort C5540I: 40GB
Interface	Ethernet 100Base-TX / 10Base-T, USB 2.0 (optional)
Printer Languages	PCL6, PCL5c, Adobe PostScript 3
Resolution	True 2,400 x 2,400 dpi
Operating Systems	Windows 95 / 98 / Me, Windows 2000 / XP, Windows NT 4.0, Windows Server 2003, Mac OS® 8.1 / 8.5 / 8.5.1 / 8.6 or later including OS X Classic, OS X 10.2.x / 10.3.x (x=up to 9)
Protocols	TCP / IP, NetWare, NetBEUI, EtherTalk (AppleTalk), IPP, Port9100

##### Copying

FCOT	Colour: 7.6 seconds Monochrome: 4.1 seconds
Concurrency	Yes
Resolution	True 2,400 x 2,400 dpi
Reduction / Enlargement	25 to 400%
Maximum Set Quantity	9,999
Internal Copy Auditor	Yes
Foreign Device Interface (optional)	Interface to 3rd party access control devices
Special Features	Job build, annotations, cover insertion, poster creation, media identification and auto tray switching

##### Network Scanning

Concurrency	Yes
Input Speed (ApeosPort C7550I / C6550I / C5540I)	Colour: 50ipm Monochrome: up to 200* / 200* / 100ipm
Resolution	600 / 400 / 300 / 200 dpi
Maximum Scan Area	A3
Network Protocol (Network Scanning)	TCP / IP (Salutation, HTTP, SMB, FTP, WebDav)
File Formats	TIFF, JPEG, PDF, high compression PDF (optional)
Document Management Fields	6
Scan Destinations	FTP, SMB, e-mail, Mailbox

##### Paper Handling - DADF

Capacity	250 Sheets
Paper Sizes	A5 to A3
Paper Weights	38 to 200gsm

##### Paper Handling - Trays 1 and 2

Capacity	500 Sheets
Paper Sizes	A5 to A3
Paper Weights	64 to 176 gsm

##### Paper Handling - Tray 3

Capacity	870 Sheets
Paper Sizes	A5 to A4
Paper Weights	64 to 176 gsm

##### Paper Handling - Tray 4

Capacity	1,140 Sheets
Paper Sizes	A5 to A4
Paper Weights	64 to 176 gsm

##### High Capacity Feeder

Capacity	2,000 Sheets
Paper Sizes	A5 to A4
Paper Weights	64 to 176 gsm

##### Paper Handling - Bypass Tray

Capacity	250 Sheets
Paper Sizes	A5 to 330mm x 483mm
Paper Weights	64 to 280 gsm

##### C-Finisher - Stacker / Stapler / Puncher\*\*

Stacker Capacity	3,000 sheets
Stacker Paper Sizes	B5 to 330mm x 483mm
Stapler Capacity	50 sheets
Stapler Paper Sizes	B5 to A3
Stapler Paper Weights	60 to 176 gsm

##### C-Finisher - Stacker / Stapler / Puncher / Saddle Stitcher\*\*

Stacker Capacity	1,500 sheets
Stacker Paper Sizes	B5 to 330mm x 483mm
Stacker Paper Weights	64 to 220 gsm
Stapler Capacity	50 sheets
Stapler Paper Sizes	B5 to A3
Stapler / Saddle Stitch Paper Weights	60 to 176 gsm
Saddle Stitcher Capacity	15 Sheets (at 90 gsm)
Saddle Stitcher Paper Sizes	A4 to 330mm x 457mm

##### Hole Puncher\*\*\*

Puncher Paper Sizes	B5 to A3
Puncher Paper Weights	60 to 176 gsm
Number of Holes	2 and 4 holes (3 holes optional)

##### General

Electrical Requirements	220 - 240V, 10A
Power Consumption	Sleep Mode: 5.7w or less Low Power Mode: 142.7w or less Maximum: 2.2KW or less
Warm Up	150 seconds
Dimensions	700mm x 781mm x 1,154mm (W x D x H)
Weight (ApeosPort C7550I / C6550I / C5540I)	246kg / 240kg / 239kg

<sup>1</sup> Web access feature is expected to be available in Australia in December 2005.  
<sup>2</sup> WHQL Certification is expected to be obtained by September 2005.

<sup>3</sup> Scanning speed of up to 200 ipm available on ApeosPort C6550I only.

<sup>4</sup> Device must be connected to the organisation's exchange server.

<sup>5</sup> Based on 5% coverage, A4 colour or monochrome.

\* Scanning A4 LEF double sided documents at 200 dpi to a mailbox

\*\* Optional feature

\*\*\* Standard with both C-Finishers

For detailed product specifications, optimum performance parameters & service clearances refer to Product Customer Expectation Document.



Protecting the environment is a fundamental component of our company's commitment to corporate citizenship.

At Fuji Xerox Australia, we supply products that have been designed with both our customers and the environment in mind. As a world leader in the development of parts and components Remanufacturing Programs, we have made Eco Manufacturing an integral part of our business.

All our sites have achieved ISO 14001 Environmental Management System Certification, as a demonstration of our commitment to protecting the environment.



13 14 12

[www.fujixerox.com.au](http://www.fujixerox.com.au)

Fuji Xerox Australia Pty Ltd. ABN 63 000 341 819. Australian Head Office: 101 Waterloo Rd, North Ryde NSW 2113. Phone (02) 9856 5000 Fax (02) 9856 5003

©2003 Fuji Xerox, Xerox, The Document Company, the stylised X, Document Centre, DocuCentre, Apeos, the Apeos logo and ApeosPort are registered trademarks/trademarks of Fuji Xerox or its associated companies. Other trademarks are the property of their respective owners. Whilst the information is correct at the time of printing, Fuji Xerox Australia Pty Ltd reserves the right to change the specifications or withdraw supply of the equipment/software described herein without notice. Quality Endorsed Company ISO 9001:2000. QEC1950/01 SA Global, Certified Environmental Management ISO 14001:2004. C110094 SA Global. Printed in Australia, January 2006.

# ApeosPort C7550I / C6550I / C5540I

Unrivalled  
Integration,  
intelligent Workflow



# the gateway to your integrated Open Office Future

Introducing ApeosPort C7550i / C6550i / C5540i, Fuji Xerox's latest colour multifunction device capable of producing exceptional quality output (true 2,400 x 2,400 dpi) at unprecedented speeds. Building on the Five Intelligent Services and the ability to integrate with virtually any organisation's infrastructure, ApeosPort improves workflow, increases productivity and protects intellectual property saving time and money.

The addition of a new Web Services framework, Apeos iiX (Apeos Internet Integration based on XML and SOAP) also extends ApeosPort's capabilities beyond those of a regular multifunction device. Apeos iiX allows users to connect to various web applications and provides a suite of Software Development Kits for the seamless customisation and integration of all business applications with ApeosPort ... making it a truly intelligent portal.

## ApeosPort C7550i / C6550i / C5540i



ApeosPort C7550i with optional Saddle Stitching Finisher

# Quality enhancement and Exceptional finishing

### Quality Enhancement

#### Emulsion Aggregation – High Grade (EA – HG) Toner

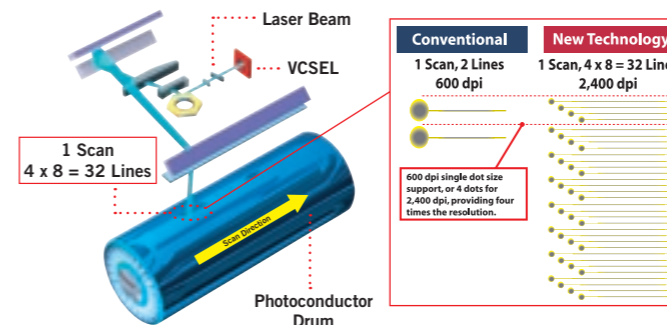
The Environmentally friendly Emulsion Aggregation – High Grade toner used in Fuji Xerox devices produces finer toner particles, uniform in size and shape to create distinctly smoother, sharper images than conventional toners.



Conventional toner suffers from screen dispersion because of particle size and uneven shape.

### Vertical-Cavity Surface-Emitting Laser (VCSEL)

To date, conventional laser technology has only been capable of writing up to two lines per scan. Using VCSEL, ApeosPort C7550i / C6550i / C5540i boasts multi-beam capabilities allowing it to write up to a whopping 32 lines per scan. VCSEL technology also controls the position of each emitter, the amount of light required to prevent uneven print density and the print time required to produce high resolution 2,400 x 2,400 dpi output.



### Load on the Run Toner and Paper

With a reserve toner tank capable of printing up to 1,200 sheets<sup>5</sup>, a dedicated toner door, and multiple paper trays to print from ApeosPort C7550i / C6550i / C5540i enables quick and easy toner and paper replacement while the machine is running without compromising on speed or quality.



### Advanced Finishing

The ApeosPort C7550i / C6550i / C5540i can be configured to include one of two optional finishers:

#### Staple/Hole-Punching Finisher

This optional finisher allows users the convenience of stapling and / or hole-punching up to 50-sheets at a time in order to create professional looking documents which don't cost the earth.

#### Saddle Stitching Finisher

In addition to the above-mentioned features, the saddle stitching finisher provides the ability to make booklets.



Staple/Hole-Punching Finisher

Saddle Stitching Finisher

**Kind to our Customers...** When you purchase a Fuji Xerox product you are purchasing reliability, not just efficiency. Training is provided on how to use the various features effectively, while our Online Support Assistant, together with our highly trained team of technicians, are on hand and included in your full service and maintenance agreement.

**... As well as our Planet ...** Additionally, Fuji Xerox products conserve natural resources through designs that minimise wastage during manufacturing and use, maximise energy efficiency in your office, and work reliably with Fuji Xerox recycled paper.



Print



Copy



Scan



E-mail



Finish

# Powerful copying and scanning

## Advanced Copying

**Single Pass Duplexing Document Feeder**  
Not only does ApeosPort C7550i / C6550i's Automatic Document Feeder hold a capacity of up to 250 sheets, it also saves time and reduces the likelihood of paper jams through its single pass scanning mechanism. Both sides of a double-sided document are scanned at once, effectively maintaining the same productivity in both simplex and duplex modes.



## Job Build

Users can divide a copy job into numerous segments and apply unique programming to each individual segment, eliminating the need for manual collation.

## Advanced Scanning

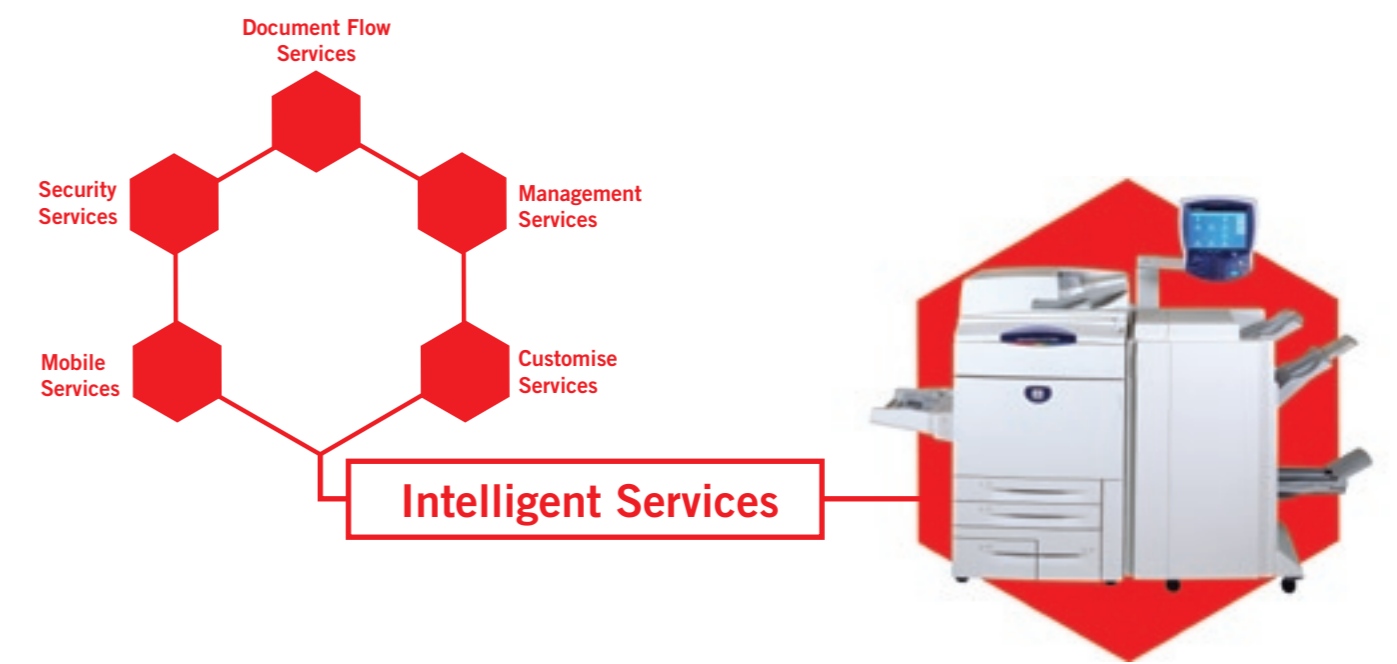
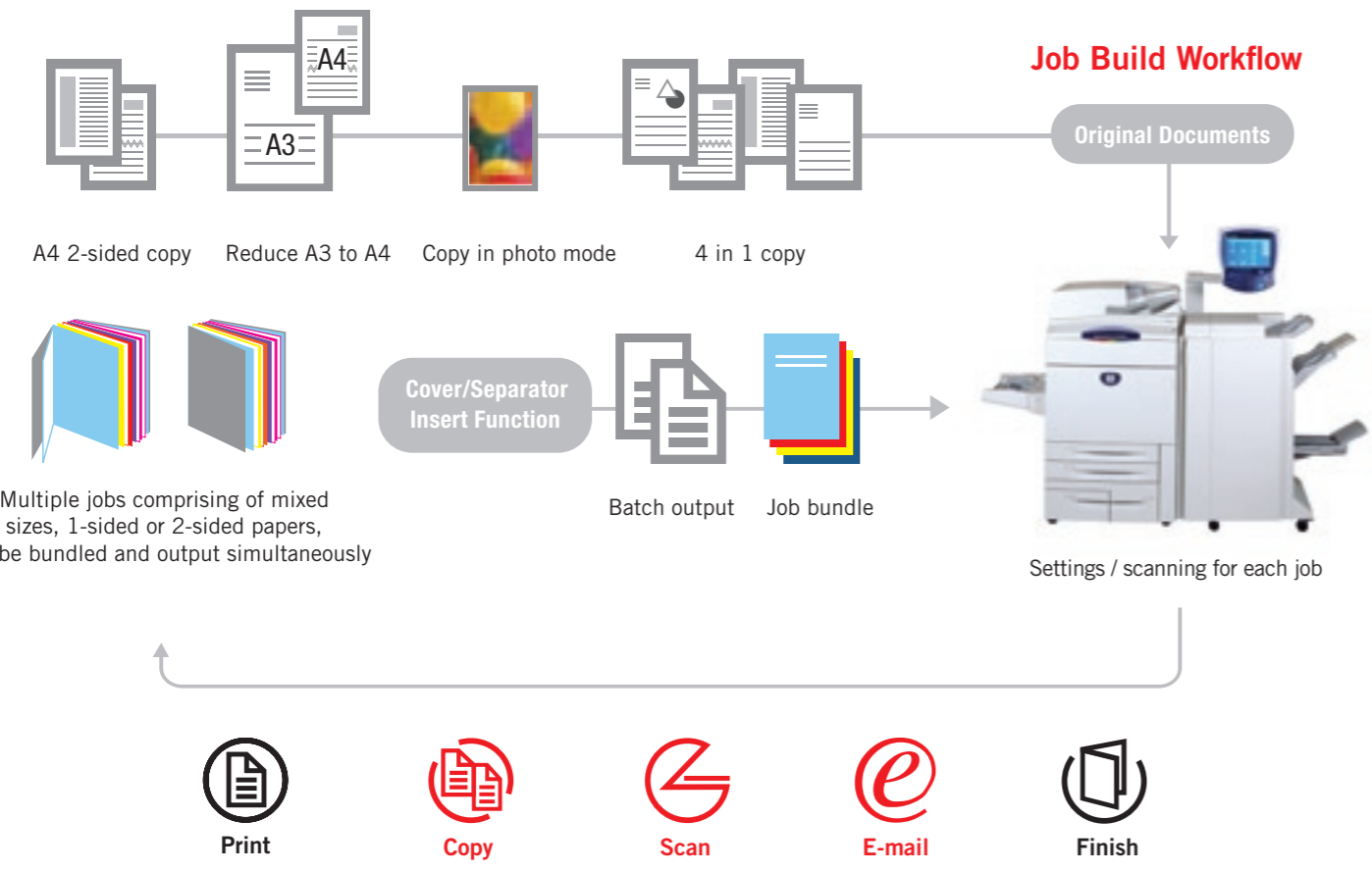
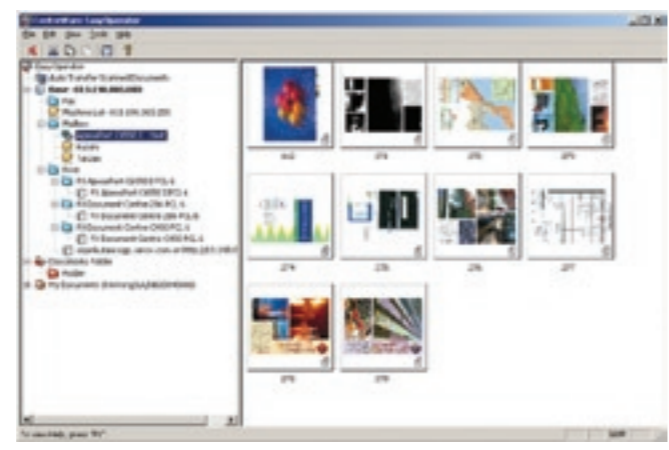
Reaching scanning speeds of up to 200ipm<sup>3</sup>, this device enables users to scan documents to email, FTP / SMB servers and / or mailboxes resident on the device.

## Light Directory Access Protocol (LDAP)<sup>4</sup>

LDAP takes the time and effort out of scanning a document to e-mail by providing users with access to the e-mail address of an intended recipient by simply searching for their name.

## WebDav

When used in conjunction with CentreWare EasyOperator, users can view the contents of a mailbox as thumbnails and at full screen if necessary.



## Five intelligent services... one open office enabler

More than just a multi-function device, ApeosPort C7550i / C6550i / C5540i is a solution with Five Intelligent Services to manage security, control costs, facilitate intra-office collaboration and enable you to work hands-on anywhere, anytime, efficiently.

### Security Services

ApeosPort C7550i / C6550i / C5540i is specially equipped with multi-tiered security capabilities designed to enhance peace of mind without subtracting any of the benefits of a networked environment.

### Secure Socket Layer (SSL) / Secure/Multi-Purpose Internet Mail Extensions (S / MIME)

This device is S/MIME and SSL compliant. This allows for the encryption and secure transfer of emails sent to and from the device as well as communications across the internet for users accessing the device remotely.

### Security Watermark

Specified Security text strings or background images can be embedded repeatedly into a print or copy document as a concealed image. This image becomes visible when any attempt is made to copy, scan or fax the protected document.

### Data Security Kit (Encryption / Overwrite / Zero Clear)

The optional Data Security Kit available with ApeosPort C7550i / C6550i / C5540i provides administrators with three security options:

- Overwriting the image partition of the HDD automatically or manually as required with a single or multiple overwrite.

- Encryption of HDD Data with a 12-digit code.

- Zero Clear deletion of all partitions including settings usually undertaken during device relocation or removal.

### Document Flow Services

Using advanced digital conversion software, ApeosPort C7550i / C6550i / C5540i easily converts hardcopy documents into digital format for distribution. Users / administrators can also program mailboxes to perform numerous activities with the documents sent to them. For example, documents scanned to a specific mailbox can be handled in one or more of the following ways in accordance with the mailbox's predefined programming:

- Printed
- Sent to FTP
- Sent to Email
- Sent to SMB

This programming can be set at the device or remotely using the standard "Job Flow Editor", a feature which also provides users with the flexibility of cloning job flows from one machine to another.

These activities not only simplify and speed up document flow within the organisation, but also support and encourage information sharing and knowledge management.



# superior printing performance

## Management Services

The Management Services group includes a suite of functions designed to simplify the setup and management of the device. These allow administrators to control costs, restrict device access and monitor usage putting an end to worries of costs running out of control and making colour affordability a concern of the past.

## Internal Auditor and Network Authentication

The Internal Auditor and Network Authentication features enable administrators to manage and control users' access to all machine (print / copy / scan) and network (scan to email / SMB / FTP) functions. Provisions can also be made to control the quantity of colour and / or monochrome jobs produced on the device.



## Management Software

A host of software packages available with this device also help simplify device management:

- **CentreWare Web** enables administrators to manage various aspects (ie installation, configuration, reporting, troubleshooting etc) of all print devices on the organisation's network regardless of manufacturer.
- **CentreWare Internet Services** (Embedded Web Server) enables administrators to configure network settings, view status, manage job queues and administer the device remotely.
- **CentreWare EasyAdmin** an optional tool, which simplifies driver set up and configuration, allowing multiple machines to be setup simultaneously and existing settings cloned to other devices.

EasyAdmin also allows administrators to download comprehensive reports / charts detailing device usage (colour and monochrome) by user and/or function.

## Device Enhancing Solutions

ApeosPort C7550i / C6550i / C5540i is also capable of easily integrating with various software solutions that Fuji Xerox Australia has co-developed with our strategic partners. These provide users with powerful new capabilities to complement their device. They include a cost recovery solution from Equitrac®, a document manipulation / repurposing solution (Scan to PC) and a document workflow solution with the capability of automating traditionally manual processes through the use of OCR / ICR / OMR technology, barcode recognition and EDRMS (EzeScan).

## Customisation Services

ApeosPort C7550i / C6550i / C5540i can also be customised to best suit the workgroup's requirements. This ability to adapt to users' needs optimises productivity and makes it a truly user-friendly solution.

### Customisable User Interface

The user interface layout can be programmed to feature only the most commonly used functions. These functions can also be set to either hard or touch screen buttons according to preference with other function keys capable of being relocated so as to simplify the user interface even further.



Feature sequence on touch screen panel can be re-arranged

Preferred functions can be assigned to the hard buttons

### Web Access<sup>1</sup>

ApeosPort C7550i / C6550i / C5540i provides a unique portal to customised web-based applications through the intuitive user interface. Users can access these applications to upload and store scanned images and / or download and print documents.



## Mobile Services

Mobile Services capabilities enable an environment where the input / output of documents are easily achieved across multiple office locations and international borders. It is ideal for executives with heavy work and travel commitments.

### CentreWare Easy Operator

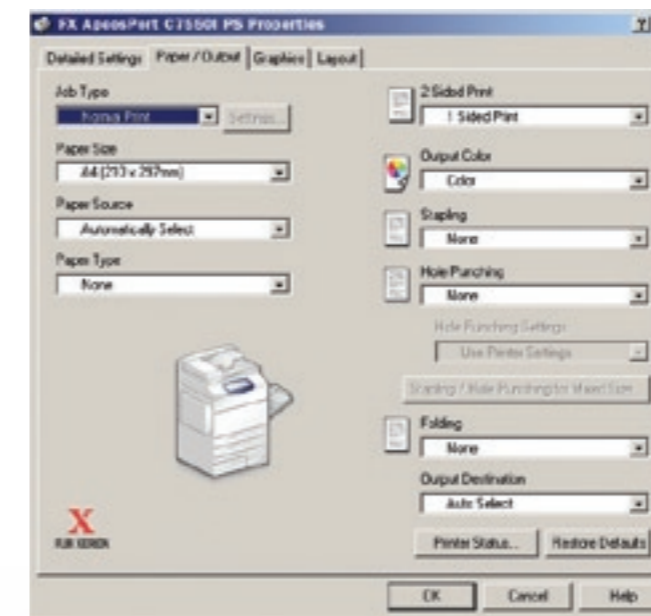
The CentreWare Easy Operator multi-location device management feature enables intra-office users to quickly and easily access devices at their current location within a network covering multiple locations.

## Advanced Printing

ApeosPort C7550i / C6550i / C5540i leads the way in productivity and quality with a powerful 600MHz processor, up to 75 / 65 / 55 ipm monochrome and 50 / 50 / 40 ipm colour print speeds, First Copy Out Time (FCOT) of 7.6 seconds or less and outstanding resolution.

## Printer Drivers

The intuitive WHQL certified<sup>2</sup> PCL6 and PostScript printer drivers are standard features on this device and enable seamless integration with various industry standard operating systems.



Standard PostScript Printer Driver

## True 2,400 x 2,400 dpi Resolution

Implementing new and advanced image processing technology, the ApeosPort C7550i / C6550i / C5540i achieves high, true 2,400 x 2,400 dpi resolution for exceptional quality output.

## Glossy Output

The standard 1GB memory also enables the production of glossy output using oil free toner; with output so rich, inhouse production of previously out sourced jobs is made possible.

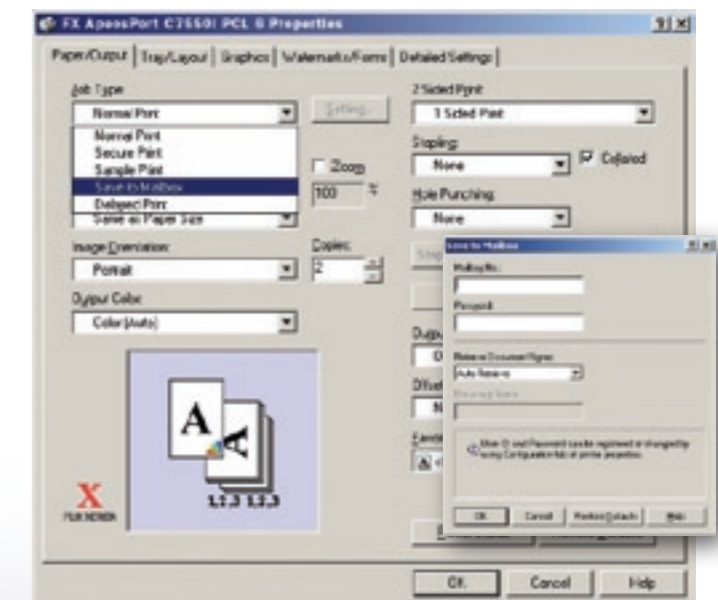
## Secure Print

Enables a print job to be sent to the device but requires the user to enter a predefined password at the device in order to release the job. Users can delete the job, or retain it on the hard disk drive for future reprinting.

## Mailbox Print / Document Merge

Documents printed frequently by multiple users can be saved to a mailbox through the Printer Driver or by scanning at the device. This allows for quick and easy retrieval of these documents on demand.

Additionally these documents can be merged with other documents stored/scanned to that mailbox to create and print one document.



Mailbox Print Using Standard PCL Printer Driver

## Favourite Print Settings

Users can save the settings of regularly printed documents as favourites on the printer driver. These settings include paper sizes, cover / tab insertion(s), print resolution and finishing requirements and can be accessed quickly and easily as required.

## Additional Features

ApeosPort C7550i / C6550i / C5540i also supports the following print features:

- Sample/Direct/Delayed Print
- N-up/Image Repeat
- Poster Creation
- Watermark/Form Printing

