

ApeosPort  
C4400

**FUJI xerox** 

# ApeosPort-III C4400

## Digital Colour Multifunction Device

Connecting your business with solutions  
that support seamless integration



# Transform your business into a network of integrated, simplified and highly flexible resources

**The ApeosPort-III C4400 multifunction device** achieves an output speed of 40 ppm in colour and 45 ppm in black and white. A powerful platform allows you to build an integrated system for your office, with colour printing, copying, scanning and optional faxing.

If you're used to black and white only, consider the benefits of adding a splash of colour to your office documents and marketing materials. Colour captures attention, enhances productivity, improves communication and could help boost sales. With many businesses competing for a share of the market, companies can greatly enhance their business image by using colour in business documents.

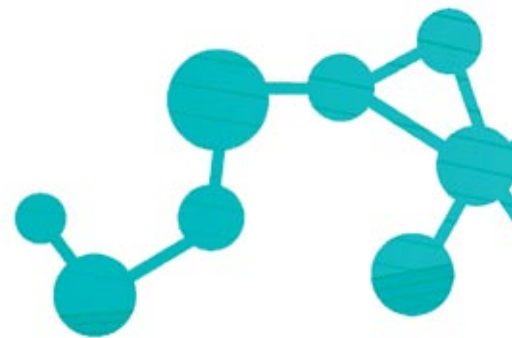
Built on Fuji Xerox's successful Apeos iiX (Apeos Internet Integration based on XML and SOAP) platform, the capabilities of these devices extend beyond those of everyday multifunction solutions. Apeos iiX turns your MFD into a document portal and can be customised to meet your business objectives. By connecting several business critical applications, you can increase staff productivity, as well as improve business and environmental efficiencies.

The ApeosPort-III C4400 has been independently verified to meet the requirements of "GECA 10-2008 Printers and Imaging Equipment" by the Good Environmental Choice Australia <http://www.GECA.org.au>



## Features at a glance

- Print, copy, scan and optional faxing
- Fast printing and copying at up to 40 ipm (colour) and 45 ipm (BW)
- Intuitive, easy-to-use colour user interface
- Equipped with powerful security measures
- USB 2.0 interface for direct print (optional)
- Versatile finishing capabilities



# Enhanced features

## Sophisticated network management features

### IPv6 Ready: The next generation Internet!



The ApeosPort-III C4400 supports IPv6 (Internet Protocol Version 6), the “next generation” protocol designed to replace the current IP Version (IPv4). IPv6 can secure a large number of IP addresses using 128-bit addresses while adding improvements such as routing and network auto configuration.

### IPsec, SNMPv3 and IEEE802.1x: Security enhancements

These devices conform to the latest industry standards for network security. IPsec (IP Security) prevents information leakage to third parties by encrypting communication content. SNMPv3, on the other hand, allows for encryption and the secure transfer of communication data between a multifunction device and a PC. IEEE802.1x offers basic functionality for the provision of secure authentication for client devices to prevent unauthorised access or use of information.

## Integration features

### Advanced technology for easy connectivity

ApeosPort multifunction devices provide improved productivity in complex global and local business environments where the integration of electronic and paper documents is a legal, operational or environmental requirement. Specific document management processes enable businesses to easily customise and automate a broad range of document workflow tasks.

## Productivity features

### Create searchable PDF's on the fly (optional)

Scanned documents can be transformed into searchable PDF's in one easy step from the device user interface, eliminating the need for expensive desktop OCR (optical character recognition) packages that are usually licensed to a single workstation. Documents can be delivered directly to a desktop, network folder or an email address.

### Create booklets with multiple-up copy

This cost saving feature conserves paper and toner by allowing users to copy multiple pages (up to 32 images) on one page.



# Configuration and finishing options

## Paper tray configurations

This device is available with four fully customisable 500 sheet (A5 to A3) paper trays as standard.

Should your workgroup require higher A4 paper capacity, ApeosPort-III C4400 is also available with two 500 sheet (A5 to A3) paper trays PLUS two high capacity (A4 / Letter) paper trays bringing its total paper capacity to up to 3,110 sheets.

## Finishing flexibility

Professional finishing options will expand your print and copy operations to help you complete the document production process at the touch of a button.

The ApeosPort-III C4400 is available with a range of finishing options for you to choose from:

- B-Finisher – Stacker / Stapler
- C-Finisher – Stacker / Stapler / Hole Puncher
- C-Finisher with Booklet Maker – Stacker / Stapler / Hole Puncher / Bi-Folder / Booklet Maker



ApeosPort-III C4400 with Tandem Tray module complete with optional C-Finisher with Booklet Maker providing ample input and output paper capacity for your workgroup



Configuration options:



**1**  
Standard Four Tray  
Configuration

or

**2**  
Tandem Tray  
Configuration

**3**  
B-Finisher  
Stacker / Stapler

**4**  
C-Finisher  
Stacker / Stapler /  
Hole Puncher

**5**  
C-Finisher with Booklet  
Maker Stacker / Stapler /  
Hole Puncher / Bi-Folder /  
Booklet Maker



**1**  
Fully customisable  
colour touch  
screen layout

**2**  
Convenient access to  
advanced functions  
such as copying,  
network scanning,  
faxing and email

**3**  
Integration with  
web-based applications

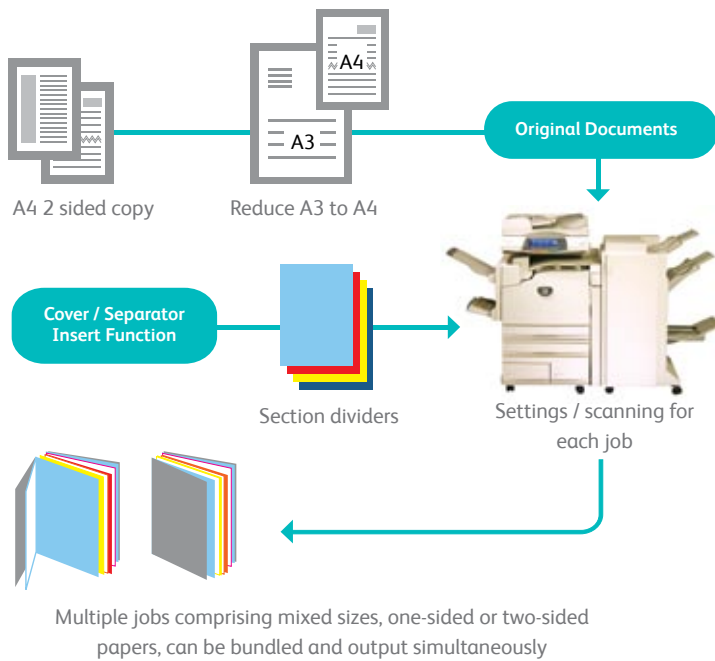
**4**  
Assign frequently-used  
features to the custom  
hard buttons

# Copy



## Job build

Merging and manipulating hardcopy documents is easy with this feature. It allows users to divide a copy job into numerous segments, apply unique settings to each, collate and print all segments; thus eliminating the need for manual copying and collation (see diagram below).



## Automatic colour sensing technology

Using built-in image sensing technology, the ApeosPort-III C4400 automatically recognises when colour is used and will apply the relevant charge.



## User defined annotations

Add information such as stamp, date and page number. Custom annotations containing up to 32 characters can be made while the size, position and colour of annotations can be changed at any time.

## Additional copy features

- Multiple-up and booklet creation
- Media identification and auto tray switching
- Poster creation
- Covers insertion

# Integrated copy and print features



# Print



## Direct printing from USB (Optional)

Print PDF, XPS, and TIFF files from your USB 2.0 flash drive or JPEG files directly from camera media<sup>1</sup> from the multifunction device, there is no need for a PC to drive this process. This feature provides complete mobility by allowing users to release documents at any printer, anywhere in the organisation.

<sup>1</sup> JPEG files retrieved only from the DCIM folder can be printed on the ApeosPort-III C4400.

## Favourite print settings

Save time by storing the settings of frequently printed documents as favourites in your print driver. Settings include paper sizes, covers, duplexing, finishing and more.

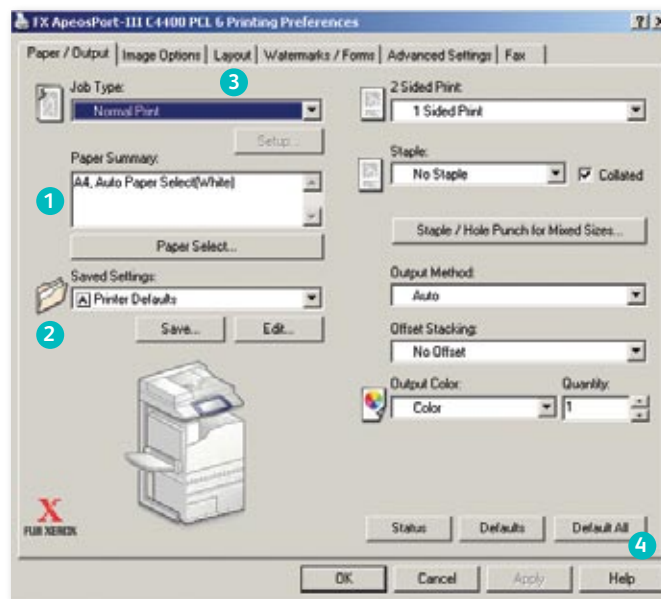
## Driverless printing

Conveniently, the ApeosPort-III C4400 allow driverless printing of PDF, TIFF or PRN files from any network connected PC via the CentreWare Internet Services web utility. This is helpful for printing at remote locations and there is no need to install print drivers.



## WHQL certified print drivers

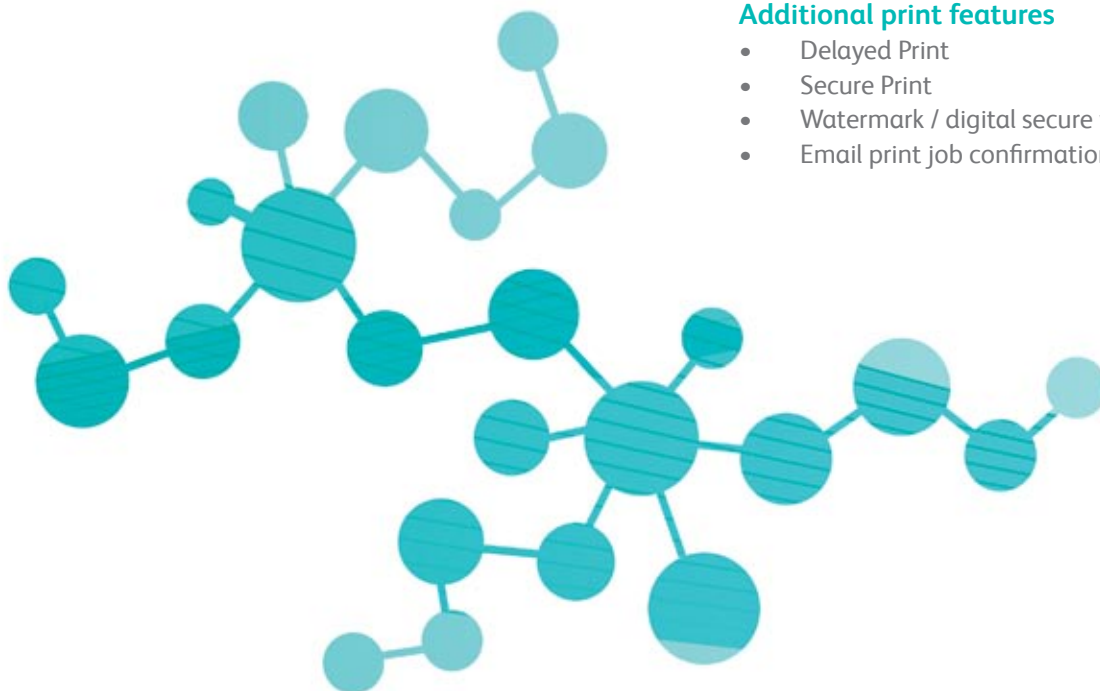
WHQL certified PCL6 and Postscript print drivers are available with these devices. With an easy-to-use interface, similar to those found on other Fuji Xerox office multifunction devices, your print production process will be substantially simplified.



- 1 Paper selection summary window
- 2 Favourite print settings
- 3 Drop down menu for secure print, fax, save to mailbox and more
- 4 Help function for feature descriptions and driver assistance

## Additional print features

- Delayed Print
- Secure Print
- Watermark / digital secure watermark (optional)
- Email print job confirmation



# Scan



# Fax



## Thumbnail display (Optional)

The retrieval of documents stored at the device is now easier than ever. Every page of a document is saved in multiple mailboxes can be viewed as thumbnails at the user interface of the device (see image below).



## Electronic fax

If there is a concern about faxes getting lost in piles of other documents, this feature eliminates paper wastage and provides peace of mind. It will route incoming faxes to a nominated email address, mailbox or network connected PC for retrieval and further distribution on demand.

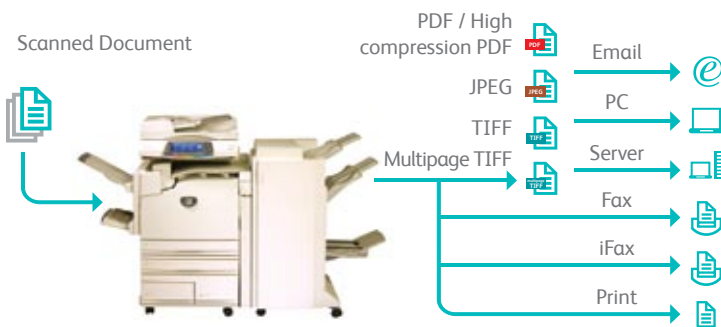


## Light directory access protocol (LDAP)

LDAP takes the time and effort out of scanning a document to email by providing users with search access to the email address of an intended recipient.

## Job flow sheets

This feature allows you to route scanned documents to multiple destinations. See diagram below:



# Integrating your scan and fax applications

## Scan to home

As easy as copying, documents can be scanned directly to a pre-designated folder on a registered PC for immediate use or archived for later retrieval<sup>1</sup>.

<sup>1</sup>External authentication is required.

## Additional scan features

- Password protect PDF documents
- Create searchable PDF's on the fly (optional)
- Restrict access to addresses not listed in the local or mail server address books
- Browse network folders

## Fax restriction

You can restrict users from sending faxes to numbers not listed in your predefined address book. This security feature will help protect the leakage of confidential information and reduce costs by preventing users from using the fax function for non-business related purposes.

## Fax re-send

This handy feature will capture and store undelivered faxes sent directly from the device. This means that a fax number can now be edited at the user interface and resend if required, without rescanning the document(s).

# Device management

## CentreWare Web

This is a management tool making it easy for administrators to install, configure, manage, monitor and report on all SNMP devices on your network, regardless of manufacturer.

## CentreWare Internet Services

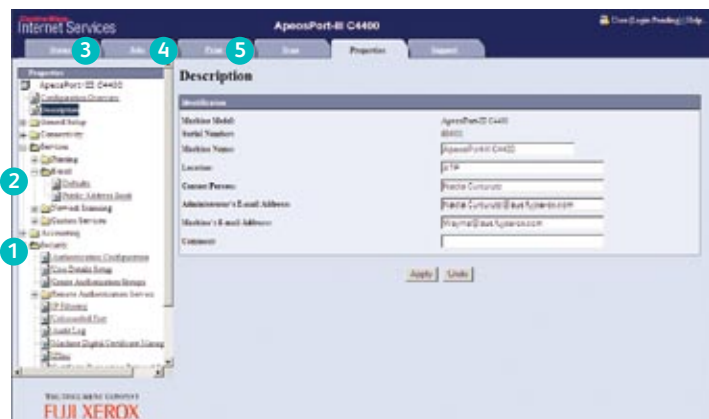
This feature allows administrators to configure device settings, monitor usage / consumable status remotely, upload address books, enable the auditor and much more.

## Manage colour printing to minimise costs

Control costs by nominating when colour could be used and by who. This ensures that colour is available to those individuals who truly leverage its power - such as the sales teams and marketing department.

## Manage and track device usage

Using Xerox Standard Accounting, device usage data can be obtained and presented as a CSV file for use in accounting and spreadsheet applications.



- 1 Configure auditor
- 2 Upload email / fax address books as csv files
- 3 Monitor paper tray /consumables status
- 4 Monitor job queues
- 5 Submit driverless print jobs

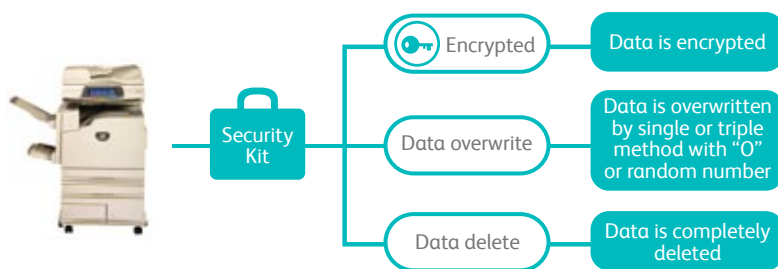
# Device security

## Secure print

Print jobs can be stored on the device and printed from the user interface after the correct password is supplied, eliminating paper wastage and securing confidential information.

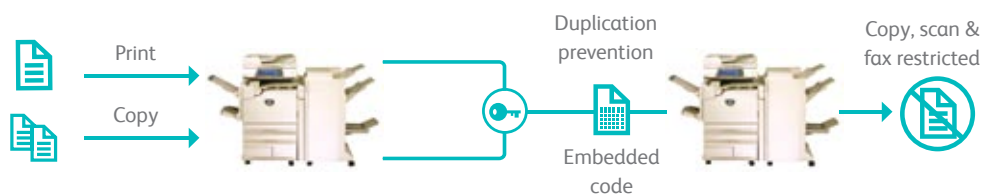
## Data security kit

The data security kit available with ApeosPort devices provides administrators with three security options:



## Secure watermark (Optional)

The optional secure watermark kit can help to prevent the unauthorised reproduction of sensitive material. This is an easy way to embed duplication restriction codes in documents when printing or copying. Documents featuring this secure watermark can not be copied, scanned or faxed using similarly equipped devices.



User prints or copies document containing embedded duplication restriction code. Copying, scanning, or faxing the document is impossible using similarly equipped devices.

# Fuji Xerox and environmental sustainability

## Fuji Xerox technology and services are designed and managed to improve sustainability performance for its customers.

Our equipment features environmentally responsible design and energy efficient enhancements. Our document software and digital technologies help reduce paper wastage and our services enable clients to improve the efficiency of document intensive business processes and optimise their equipment infrastructure to save costs and cut carbon emissions.

### Design for the environment

Every piece of Fuji Xerox equipment is designed with the environment in mind and our achievements include:

- Eliminating the need to use hazardous material such as lead-based solder;
- Enabling low energy consumption during use of the machine;
- Utilising innovative and energy efficient toner;
- Minimising the use of new resources; and
- Facilitating the remanufacture or recycling of used machines and parts at end of life

### A leader in product stewardship

Fuji Xerox was first to market with products made from reused components and we take responsibility for all end-of-life products. We achieve over 99% resource recovery from the products returned to us at our state of the art facilities. This is made possible by our development of an “Integrated Recycling System”.

### Carbon calculator

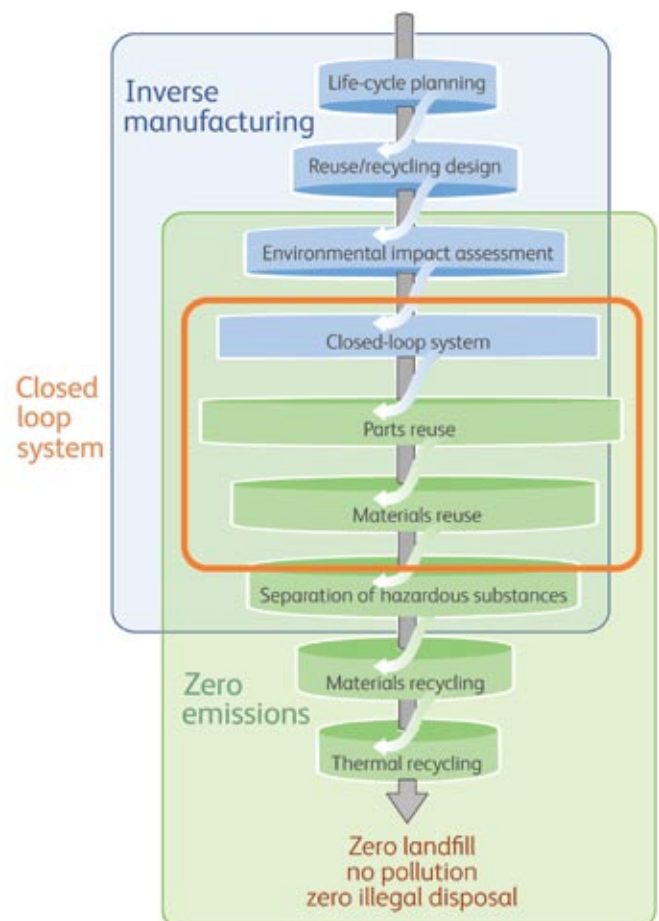
Fuji Xerox Australia has developed a carbon calculator that estimates the energy consumed through the operation of an office document infrastructure. We can demonstrate how replacing and / or consolidating devices may reduce your carbon footprint while providing enhanced functionality and a platform for future innovation.

[www.fujixerox.com.au/carbon\\_calculator](http://www.fujixerox.com.au/carbon_calculator)

### Integrated Recycling System

This system is based on three concepts:

- **Closed loop system** - we ensure used products are thoroughly and effectively used as resources;
- **Inverse manufacturing** - products are designed to minimise environmental impacts and maximise parts reuse; and
- **Zero emissions** - parts that cannot be reused are separated and recycled, and used as new materials again



# Extending your capabilities with Apeos Solutions

**Apeos iiX (Apeos Internet Integration based on XML and SOAP)** extends ApeosPort's capabilities beyond those of a regular multifunction device (MFD). Apeos iiX allows users to connect to various web applications and provides a suite of Software Development Kits for the customisation and integration of business applications with ApeosPort... making it a truly intelligent portal.

Applying these technologies to document intensive processes, enables greater productivity and efficiencies benefiting both the bottom line and the environment.

## **Apeos Image Gateway Solutions**

Fuji Xerox has partnered with Nuance, Captaris and Bear Solutions, leading suppliers of document workflow, fax server and cost recovery technologies to co-develop a range of innovative solutions that will integrate with your ApeosPort devices to help streamline workflows, improve efficiencies and manage costs.

## **RightFax for Apeos**

A fax server solution, RightFax for Apeos provides faxing capabilities without installing a fax board on your ApeosPort device. Faxes can be sent at the device or directly from a user's PC. At the user

interface, users are given the opportunity to attach a predefined cover sheet (that can be auto populated), specify a send time / date, request an emailed or printed job confirmation and more. Sent and received faxes can also be tracked using the web access utility at any network connected PC.

## **OmniPage for Apeos**

This scanning solution will provide users with the extended ability to digitise hard copy documents as text only or text searchable PDF files. Documents can be de-skewed and / or rotated as required prior to distribution to an email address or network repository, reducing the business and environmental cost of hard copy distribution and archiving.

## **XCMS for Apeos**

XCMS for Apeos is a comprehensive cost recovery solution that works with a range of swipe / proximity cards to capture usage data for all the copies, prints, scans and faxes produced by individual users on your fleet of ApeosPort devices enabling responsible paper use management and measurement.

Combining XCMS for Apeos with RightFax and OmniPage for Apeos extends its feature sets even further to include the powerful "My Prints" and "My Faxes" options from any enabled ApeosPort device on your organisation's LAN or WAN.



## Specifications of ApeosPort-III C4400 Series

### Copy Function

ApeosPort-III C4400	
Type	Console Type
Memory	1 GB (Max: 1,024 MB)
HDD	40 GB <sup>1</sup> (Standard)
Scanning Resolution	600 x 600 dpi
Warm-up Time	70 sec. or less (at room temperature 20°C)
Original Paper Size	Max: 297 x 432 mm (A3, 11 x 17") for both sheet original and book original
Output Paper Size	Max: A3, 11 x 17" [For Bypass Tray: Max: 126 x 177" (320 x 449.6 mm), 12 x 18" 304.8 x 475.2 mm] Min: A5 [For Bypass Tray, Postcard (100 x 148 mm), Envelope (120 x 235 mm)]
Output Paper Weight	Tray: 64 - 169 gsm Bypass Tray: 55 - 220 gsm
First Copy Output Time	BW: 4.8 sec / Colour: 7.2 sec.
Continuous Copy Speed	A4 45 ppm <BW> 40 ppm <Colour> A3 22 ppm <BW> 20 ppm <Colour>
Paper Tray Capacity	4 Tray: 500 sheets x 4 trays + Bypass 90 sheets Max: 2,090 sheets Tandem Tray: 500 sheets x 2 trays + 875 sheets + 1,145 sheets + Bypass 90 sheets Max: 3,110 sheets
Output Tray Capacity	400 sheets (A4LEF), 200 sheets (A3)
Power Supply	AC 220 - 240 ± 10% / 110 V ± 10%, 10 / 15 A for both 50 / 60 Hz ± 3%
Power Consumption	110 V: 1.65 kW or less / 220 V: 2.2 kW or less / 240 V: 2.4 kW or less Sleep Mode: 11 W, Low Power Mode: 109 W Standby Mode: 215 W
Dimensions	W 666 x D 794 x H 1,141 mm
Machine Weight	166 kg (4Tray Model) / 175 kg (Tandem Tray Model)
<sup>1</sup> Usable Space: 35GB	

### Print Function

ApeosPort-III C4400	
Type	Built-in Type
Print Resolution	1,200 x 1,200 dpi
PDL	PCL6, PCL5 (standard), Adobe® PostScript® 3™ (optional)
Operating System	Standard (PCL6/PCL5): Windows® 2000, Windows® XP, Windows® XPx64, Windows Server® 2003, Windows Server® 2003 x64, Windows Vista®, Windows Vista® x64, Windows Server® 2008, Windows Server® 2008 x64 Optional (Adobe® PostScript® 3™): Windows® 2000, Windows® XP, Windows® XPx64, Windows Server® 2003, Windows Server® 2003 x64, Windows Vista®, Windows Vista® x64, Windows Server® 2008, Windows Server® 2008 x64, Mac OS X 10.3.9 / 10.4.11 (except 10.4.7), Mac OS X 10.5
Connectivity	Standard: Ethernet 100 BASE - TX / 10BASE-T Optional: Bidirectional Parallel IEEE 1284-B, USB 2.0

### Scan Function

ApeosPort-III C4400	
Type	Colour Scanner
Scanning Speed	BW: 50 ipm, Colour: 45 ipm
Scanning Resolution	600 x 600 dpi, 400 x 400 dpi, 300 x 300 dpi, 200 x 200 dpi
Connectivity	Ethernet 100 BASE - TX / 10 BASE-T
Scan Destinations	Scan to Email, MailBox, PC / Server (using FTP / SMB protocol)

Protecting the environment is a fundamental component of our company's commitment to corporate citizenship. At Fuji Xerox Australia, we supply products that have been designed with both our customers and the environment in mind. As a world leader in the development of parts and components Remanufacturing Programs, we have made Eco Manufacturing an integral part of our business. All our sites have achieved ISO 14001:2004 Environmental Management System Certification, as a demonstration of our commitment to protecting the environment.

Descriptions in this material, product specifications and / or appearances are subject to change without prior notice due to improvements. Please note that the product colour appears differently from the actual colour as a result of properties of papers or printing ink. Windows and Windows NT are registered trademarks of Microsoft Corporation. NetWare is a registered trademark of Novell, Inc. in the United States. Macintosh, Mac OS and Ether Talk are trademarks of Apple Computer, Inc. PostScript is a registered trademark of Adobe Systems Incorporated in each country. HP-GL is a registered trademark of Hewlett-Packard Company. Nuance, the Nuance logo and OmniPage are registered trademarks or trademarks of Nuance Communications, Inc. in the United States and other countries and are used here under license. RightFax, Alchemy and Captaris are registered trademarks or trademarks of Captaris Inc. and are used here under license. The XCMS logo is used with permission from BEAR Solutions (Australasia) Pty Ltd.

Spares for the standard configuration of installed machines are supported for up to 7 years from the date of the end of machine production.

### Fax Function (Optional)

ApeosPort-III C4400	
Send Document Size	Max: A3, 11 x 17"
Recording Paper Size	Max: A3, 11 x 17", Min: A5
Transmission Time	Less than 3 seconds
No. of Fax Lines	PBX, PSTN, Max: 3 ports (G3 - 3 port)

### Duplex Automatic Document Feeder

ApeosPort-III C4400	
Capacity	75 sheets
Original Paper Size	Max: A3, 11 x 17", Min: A5
Original Paper Weight	38 - 128 gsm (In Duplex: 50 - 128 gsm)

### Side Tray (Optional)

ApeosPort-III C4400	
Paper Size	Max: A3, 11 x 17", Min: A5
Capacity	200 Sheets

### B-Finisher (Optional)

ApeosPort-III C4400	
Paper Size / Paper Weight	Max: A3, 11 x 17", Min: B5, 64 - 128 gsm
Stacker Capacity	[Without Staple] A4: 1,000 Sheets, B4: 500 sheets, Mixed Stacking: 300 Sheets [With Staples] A4: 50 Sets

#### Staple

Capacity	50 Sheets (Max: 64 gsm)
Paper Size	Max: A3, 11 x 17", Min: B5
Position	Single (Front / Angled, Back / Straight), Dual (Parallel)

### C-Finisher with Booklet Maker (Optional)<sup>2</sup>

ApeosPort-III C4400	
Paper Size / Paper Weight	Exit Tray: Max: 12 x 18", Min: Postcard (100 x 148 mm), 55 - 220 gsm Finisher Tray: Max: 12 x 18", Min: B5, 64 - 220 gsm
Stacker Capacity	A4 up to 1,500 Sheets. [With Staple] Up to 200 Sets or 1,500 Sheets Booklet / Fold: Up to 20 sets

#### Staple

Capacity	50 Sheets, Max: 90 gsm
Paper Size	Max: A3, 11 x 17", Min: B5
Position	Single (Front / Back / Angled), Dual (Parallel)

#### Punch

Paper Size	A3, 11 x 17", B4, A4, A4 LEF, Letter (8.5 x 11"), Letter (8.5 x 11") LEF, B5 LEF
Number of Holes	2 / 4 holes (Option: US2 / 3 holes)
Paper Weight	55 - 220 gsm

#### Booklet Finishing

Capacity	Saddle - Stapling: 15 Sheets, Half-Folding 5 Sheets
Paper Size	Max: A3, 11 x 17", Min: A4, Letter (8.5 x 11")
Paper Weight	Saddle - Stapling: 64 - 90 gsm, Half - Folding: 64 - 105 gsm

<sup>2</sup>Non Booklet Maker C-Finisher is available with stacker capability A4 up to 3,000 sheets

### Customer Expectation Document (CED)

For detailed product specifications, optimum performance parameters and service clearances refer to Product Customer Expectation Document.



**Reproduction Prohibitions.** Please note that the reproduction of the following is prohibited by law: domestic and overseas bank notes, government-issued securities, national bonds and local bond certificates; unused postage stamps and some post cards; certificate stamps; and copyright material (literary works, musical works, paintings, engraving, maps, cinematographic works, photographic works etc) except where and to the extent that the local law provides otherwise. This product is equipment with anti-counterfeit feature. This feature is not intended to prevent illegal reproduction.



#### For Your Safe Use

Before using the product, read the Instruction Manual carefully for proper use.  
Use the product with an appropriate adequate power source and voltage displayed. Be sure to establish a ground.  
In the case of a failure or short circuit, an electric shock may result.



For more information or detailed product specifications, call or visit us at

**Fuji Xerox Australia** 101 Waterloo Road,  
Macquarie Park NSW 2113  
Tel. (02) 9856 5000 Fax. (02) 9856 5003

[www.fujixerox.com.au](http://www.fujixerox.com.au)